



MINOMESS 130

Water Meter for cold and hot water



with reed switch

Minol
International

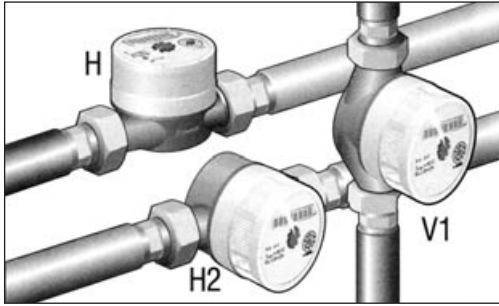
WATER METER

- APARTMENTS
- CONDOMINIUMS
- COMMERCIAL BUILDINGS

- ASSISTED LIVING COMMUNITIES
- MANY OTHERS

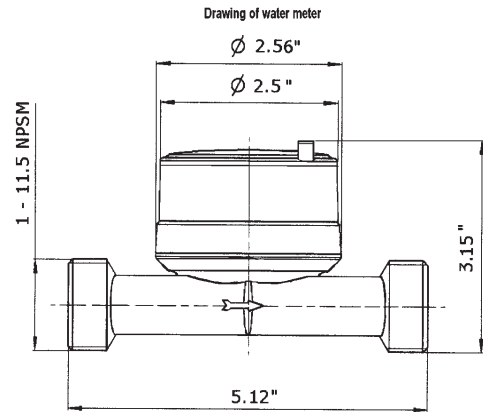
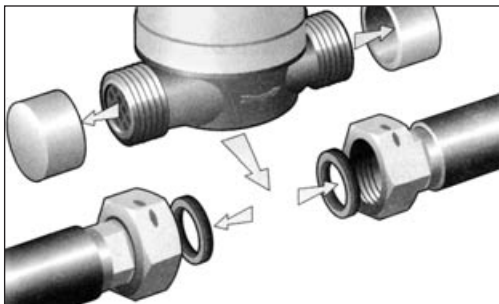
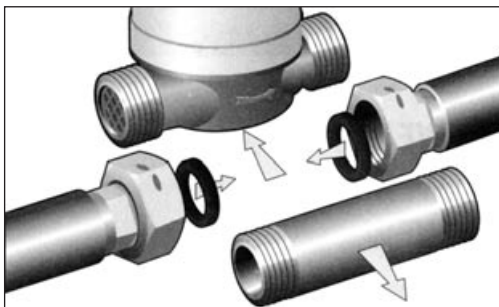
Minomess 130

with reed switch for cold and hot water



Installation:

- Local plumbing codes and regulations should be followed for water meter use and installation.
- A 1^{1/2}" length of straight pipe "settling path" is required just upstream of the water meter.
- All sediment should be flushed out through a spacer pipe before meter installation.
- Install the meter in an easily accessible area after the shut off valve.
- The flow indicator arrow stamped on the water meter body, should be installed in the direction of water flow.
- Meter couplings are recommended for water meter installations and are available separately.
- Meter register may be turned 360 degrees for easier reading.



Connection Size	Std. ANSI/ASME B1.20.1-1983 1-11.5 SNPSM thread 5/8 x 3/4 in. ID
Dimensions:	
Mounting length	5.12 in.
Width	2.50 in.
Height	3.15 in.
Weight	1.32 lb.
Water Temperature Range:	86° F to 194° F
Meter Register:	
Maximum reading	99,999,999 US gal.
Resolution (digit register)	1 US gal.
Resolution (indicator dial)	0.05 US gal.
Reed Switch:	
Type	Dry-contact
Contact rating	100 mA max.
Resolution	1 contact closure per 1 US gal.
Duty cycle	0.7 gal. open / 0.3 gal. closed (typ.)
Cable length (2-wire)	59 inches
Pressure Drop:	
At 22.02 gpm	< 14.50 PSI (typ. < 8.70 PSI)
At 11.01 gpm	< 3.625 PSI

Advantages:

- Cost-effective
- Compact size
- Vertical or horizontal installation
- For hot or cold water application
- Single-jet
- Nickel-plated brass meter body
- 2-year limited warranty
- Pulse output
- 8 digit odometer

Different applications:

- Apartments
- Condominiums
- Commercial building
- Assisted living Communities
- Manufacturing Facilities

Options:

- Meter couplings (two required per meter)
- Meter spacer pipe (length 5.12 in.)

Accuracy	AWWA Spec	Minomess 130 Horizontal	Minomess 130 Vertical
Minimum flow (0.25 – 1 gpm)	97-103 %	97-103 %	97-103 %
Normal flow (0.25 – 1 gpm)	98.5-101.5 %	98.5-101.5 %	98.5-101.5 %
Safe maximum operating capacity	20 gpm	22.02 gpm	22.02 gpm

(AWWA specification shown for comparison)

Available from:



Cross Instrumentation
1500 Farmer Road
Building J
Conyers
Georgia, 30012

Phone (770) 929-8441
Fax (770) 929-8278
Toll-Free (800) 332-3418
www.crossinstrumentation.com
ciconyers@crossco.com